

## **Rupture of hepatic adenoma and hemoperitoneum after blunt abdominal trauma**

Ana Torre\*; Catarina Ortigosa; Hugo Louro; Wilson Malta; Sílvia Costa; António Almeida; José Vieira; Jorge Santos; Manuel Oliveira

**\*Corresponding Author: Ana Torre**

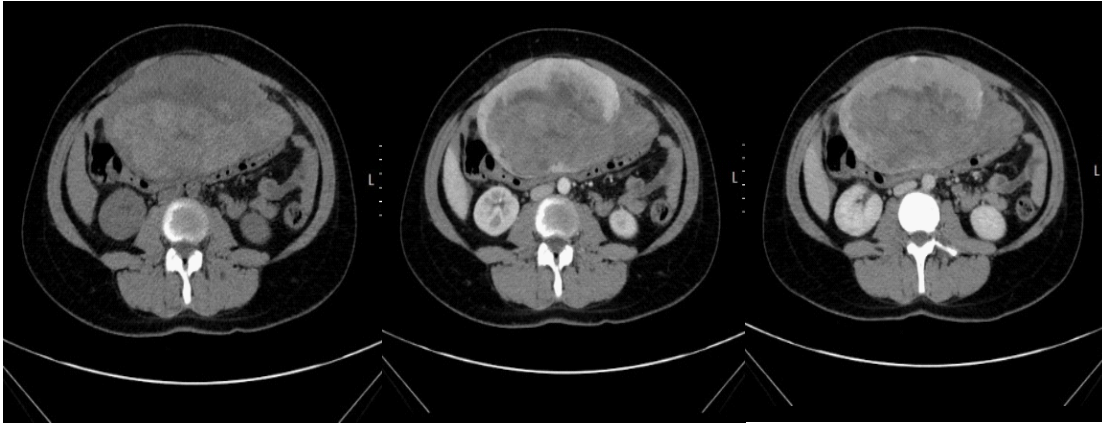
General Surgery Department, Centro Hospitalar Vila Nova de Gaia/Espinho, Portugal.

Email: anatorre90@gmail.com

### **Description**

Hepatocellular adenoma is a rare benign tumor found in young woman with history of oral contraceptive use [1]. The majority of patients with hepatic adenoma are asymptomatic, but the occurrence of large and multiple adenomas is frequently associated with complications. The two main complications are symptomatic hemorrhage (15–20%) and malignant transformation into hepatocellular carcinoma (<5%).

Here we report the case of a 33 years-old-woman that was admitted to our emergency department with abdominal pain after being run over. Her vital signs were normal and a palpable mass with tenderness in umbilical region was detected. At blood samples hemoglobin was 8.2 g/dL, CRP was 14.5 mg/dL and there was a slight elevation of liver enzymes (AST: 176 U/L, ALT: 199). Coagulations tests were in normal range. CT scan revealed a large epigastric mass extending to the periumbilical region, measuring approximately 14 X 8.7 X 13.5 cm, with proximal pole in close relationship with the inferior aspect of the left lobe of the liver, being vascularized by the respective branches of the left hepatic artery and with venous drainage to the suprahepatic veins (Figure 1,2). There was an intralesional hematoma with a left side rupture in communication with a sentinel hematoma. There was also a small volume of hemoperitoneum in perihepatic topography and in the pelvic excavation.



**Figure 1:** Contrast-enhanced CT scan (axial view)



**Figure 2:** Contrast-enhanced CT scan (coronal view).

## References

1. Kerlin P, Davis GL, McGill DB, Weiland LH, Adson MA, Sheedy PF. Hepatic adenoma and focal nodular hyperplasia: clinical, pathologic, and radiologic features. *Gastroenterology* 1983; 84: 994-1002.
2. van Aalten SM, de Man RA, JN IJ, Terkivatan T. Systematic review of haemorrhage and rupture of hepatocellular adenomas. *Br. J. Surg.* 2012; 99: 911-916.
3. Kakar S, Grenert JP, Paradis V, Pote N, Jakate S, Ferrell LD. Hepatocellular carcinoma arising in adenoma: similar immunohistochemical and cytogenetic features in adenoma and hepatocellular carcinoma portions of the tumor. *Mod. Pathol.* 2014; 27: 1499-1509.

**Manuscript Information:** Received: November 19, 2021; Accepted: February 10, 2022; Published: February 28, 2022

**Authors Information:** Ana Torre\*; Catarina Ortigosa; Hugo Louro; Wilson Malta; Sílvia Costa; António Almeida; José Vieira; Jorge Santos; Manuel Oliveira

General Surgery Department, Centro Hospitalar Vila Nova de Gaia/Espinho, Portugal.

**Citation:** Torre A, Ortigosa C, Louro H, Malta W, Costa S, Almeida A, et al. Rupture of hepatic adenoma and hemoperitoneum after blunt abdominal trauma Open J Clin Med Case Rep. 2022; 1830.

**Copy right statement:** Content published in the journal follows Creative Commons Attribution License (<http://creativecommons.org/licenses/by/4.0>). © **Torre A (2022)**

**About the Journal:** Open Journal of Clinical and Medical Case Reports is an international, open access, peer reviewed Journal focusing exclusively on case reports covering all areas of clinical & medical sciences.

Visit the journal website at [www.jclinmedcasereports.com](http://www.jclinmedcasereports.com)

For reprints and other information, contact [info@jclinmedcasereports.com](mailto:info@jclinmedcasereports.com)